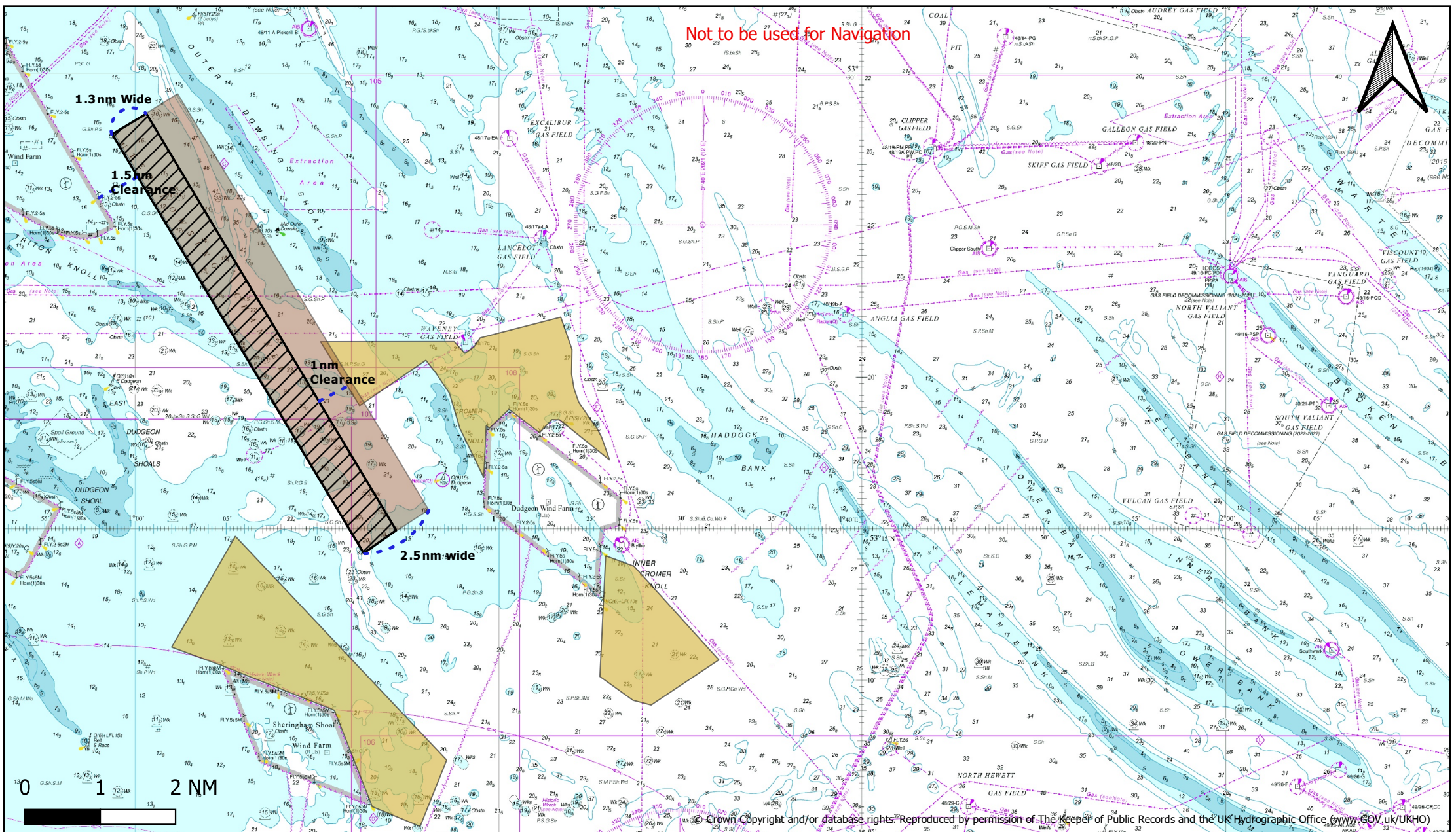





Not to be used for Navigation



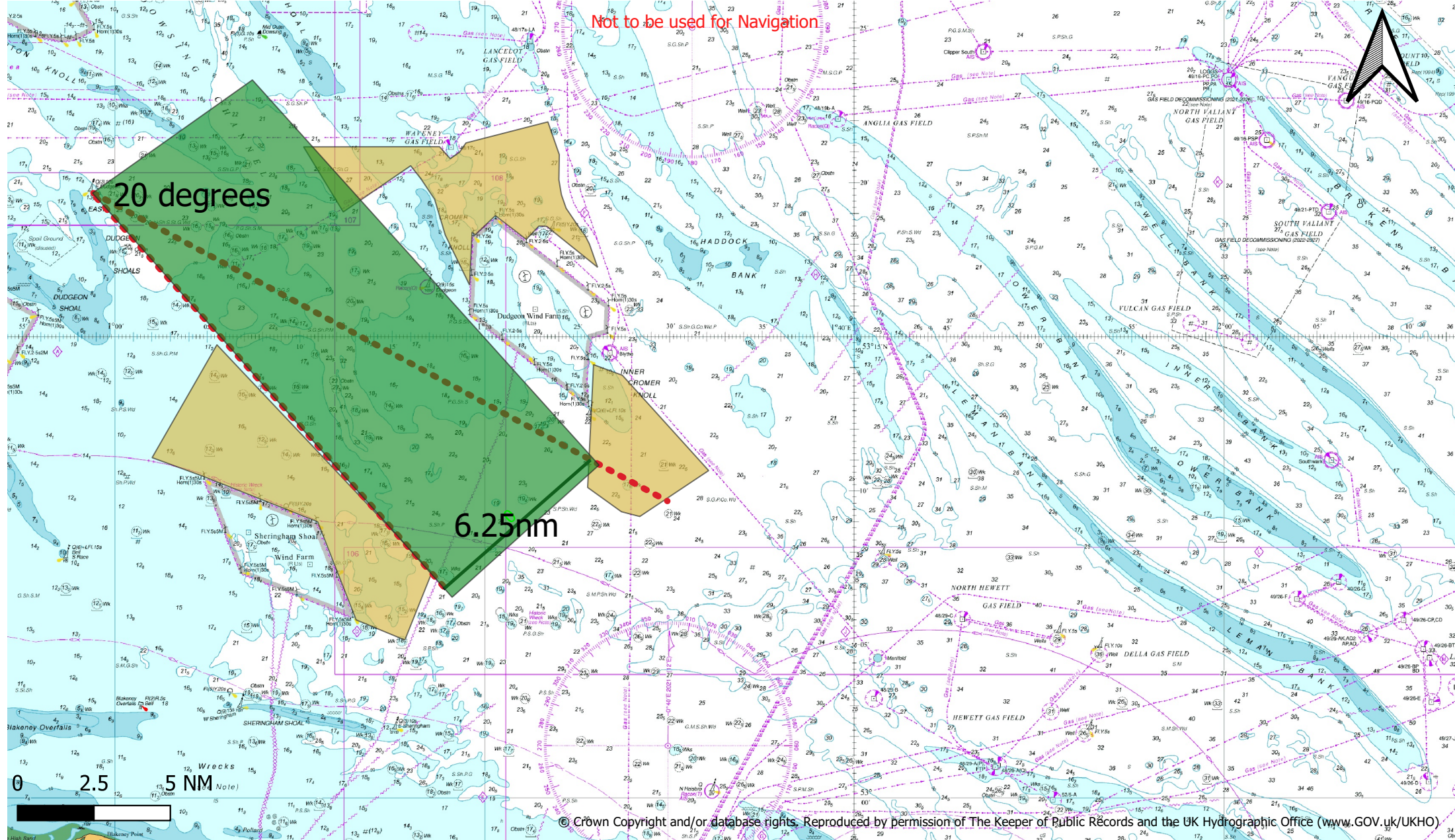
© Crown Copyright and/or database rights. Reproduced by permission of The Keeper of Public Records and the UK Hydrographic Office ([www.GOV.UK/UkHO](http://www.GOV.UK/UkHO))

-  90th percentile with 1nm clearance from DEP North
-  90th Percentile (Tees- Zeebrugge)
-  DEP & SEP Extensions

Drawn by: VJo  
 Checked by: NS  
 Coordinate System: WGS84  
 Ver 1.0  
 Date: 29/03/23



Not to be used for Navigation






20 degrees

6.25nm

2.5 5 NM

© Crown Copyright and/or database rights. Reproduced by permission of The Keeper of Public Records and the UK Hydrographic Office (www.GOV.UK/UKHO)

**Legends**

-  Corridor solid box
-  SEP\_DEP 20 degree Line
-  Proposed SEP& DEP Extensions

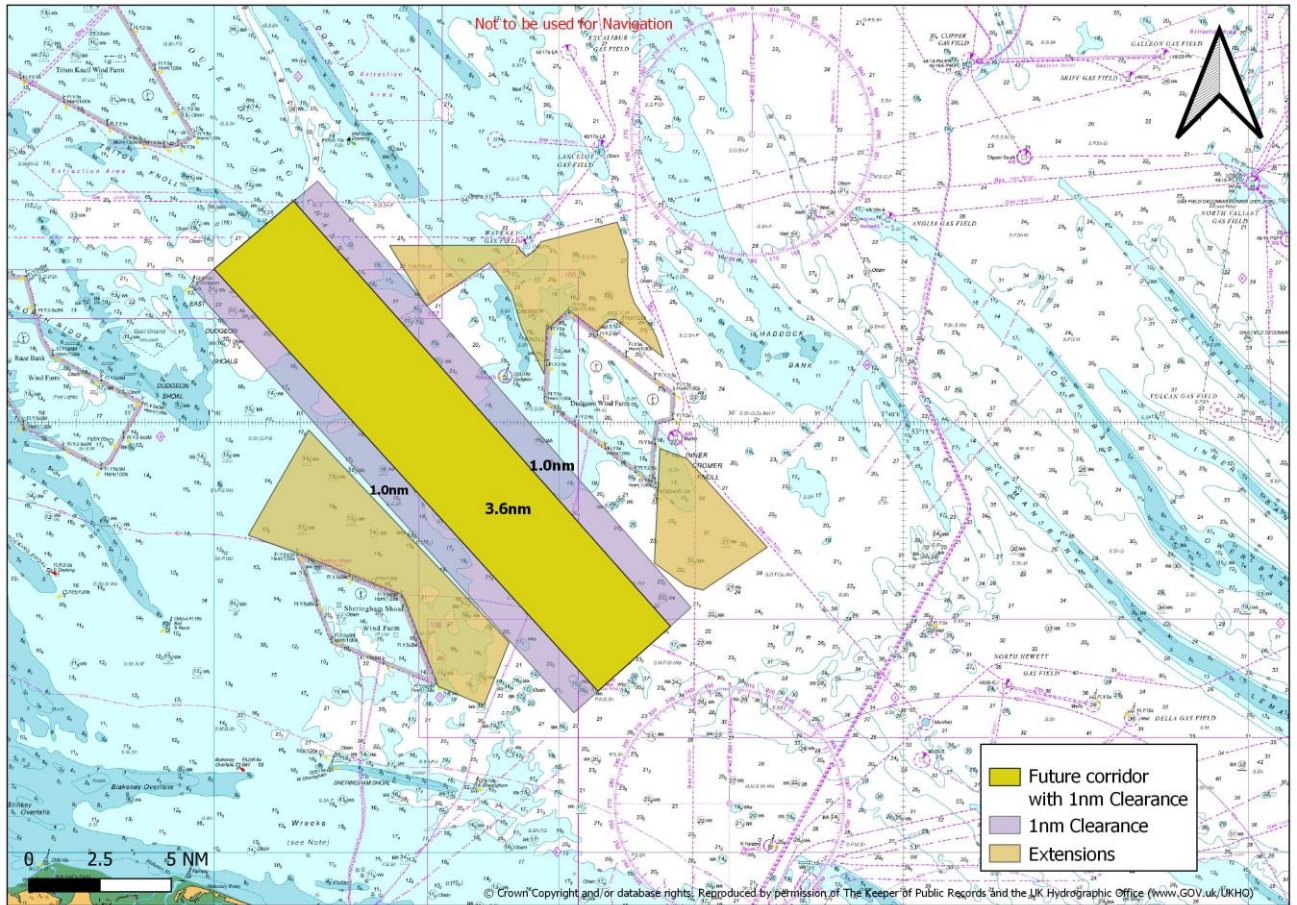
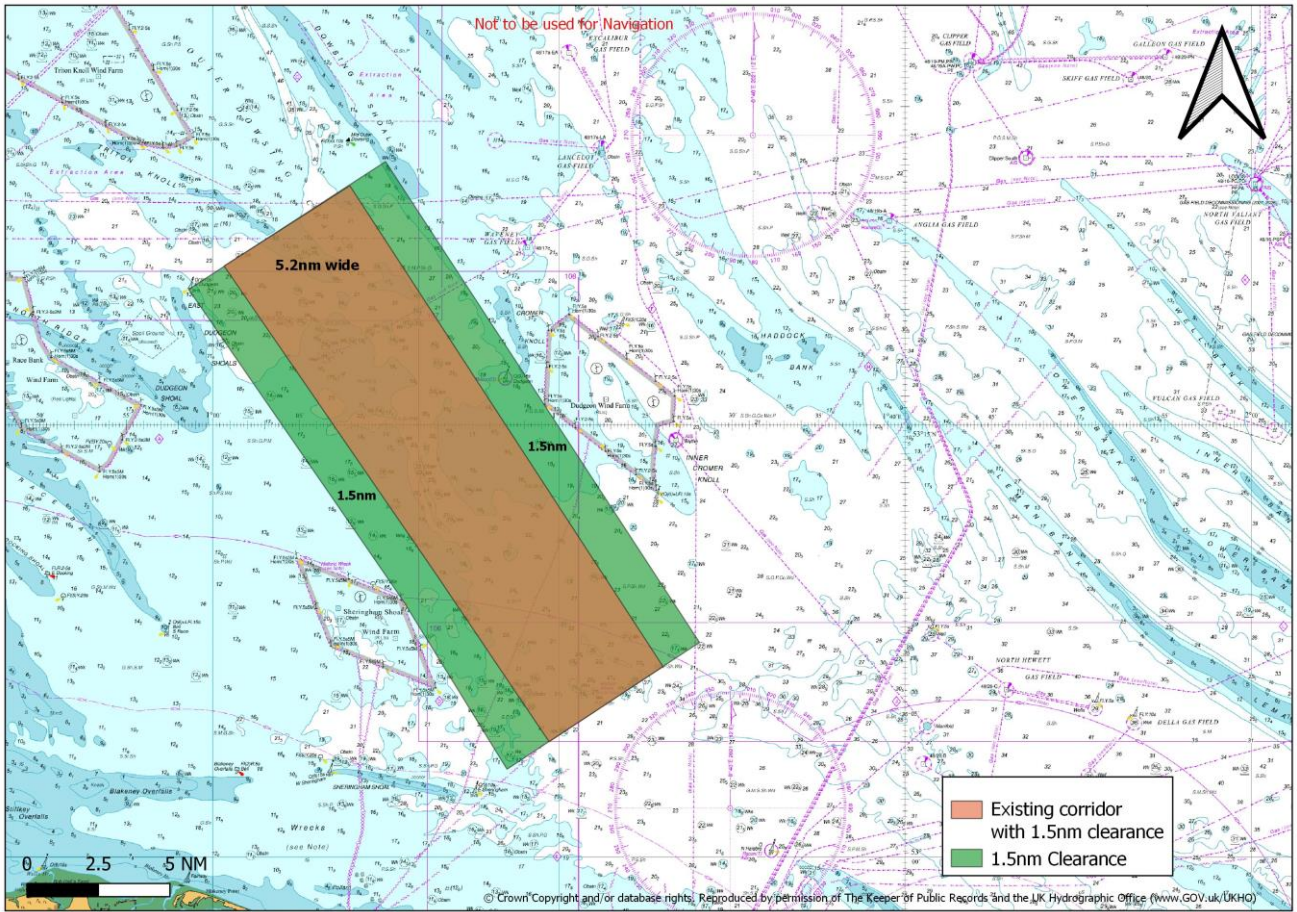
Drawn By: VJo  
 Checked By: NS

Coordinate System: WGS84  
 Ver 1.0

Date:24/03/2023




**Maritime &  
Coastguard  
Agency**



Drawn By: VJo  
 Checked By: NS  
 Coordinate System: WGS84  
 Ver 1.0  
 Date: 24/03/2023

